

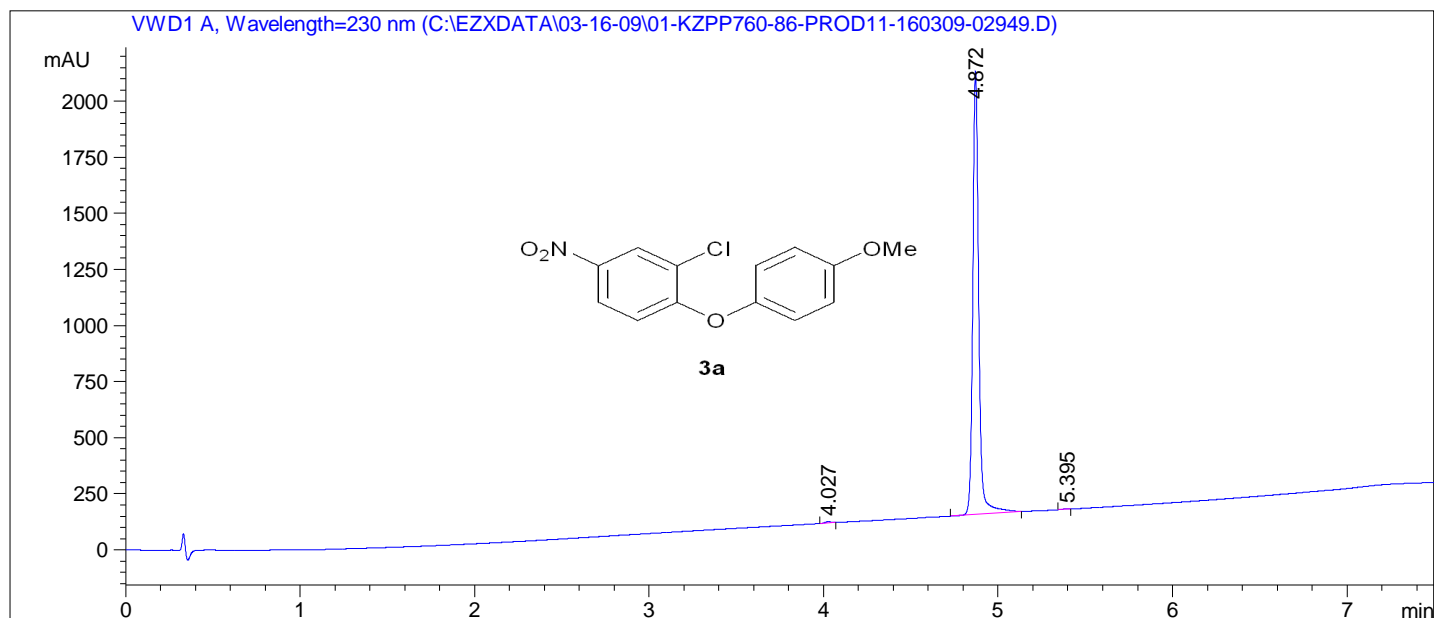
Sample Name: 01-kzpp760-86-prod

Supplementary Material (ESI) for Organic & Biomolecular Chemistry

This journal is © The Royal Society of Chemistry 2010

=====
 Acq. Operator : Jameel Marafie
 Acq. Instrument : ACLC045 Location : Vial 61
 Injection Date : 16/03/2009 12:01:39 Inj Volume : 2 µl
 Acq. Method : C:\Chem32\1\METHODS\GENERIC3A.M
 Last changed : 16/03/2009 12:00:54 by Jameel Marafie
 Analysis Method : C:\Chem32\1\METHODS\STANDBY.M
 Last changed : 03/11/2009 17:14:32 by JMoseley
 Method Info : Standby method

Sample Info : =====
 Column: 3 Polaris Amide



=====
 Area Percent Report
 =====

Sorted By : Signal
 Multiplier : 1.0000
 Dilution : 1.0000
 Use Multiplier & Dilution Factor with ISTDs

Signal 1: VWD1 A, Wavelength=230 nm

Peak #	RetTime [min]	Type	Width [min]	Area mAU*s	Height [mAU]	Area %
1	4.027	BB	0.0382	12.63399	5.13519	0.2643
2	4.872	BB	0.0369	4763.15918	1973.33826	99.6529
3	5.395	BB	0.0349	3.95565	1.76561	0.0828

Totals : 4779.74882 1980.23906

=====
 Summed Peaks Report
 =====

Signal 1: VWD1 A, Wavelength=230 nm

Sample Name: 02-kzpp760-13-prod

Supplementary Material (ESI) for Organic & Biomolecular Chemistry

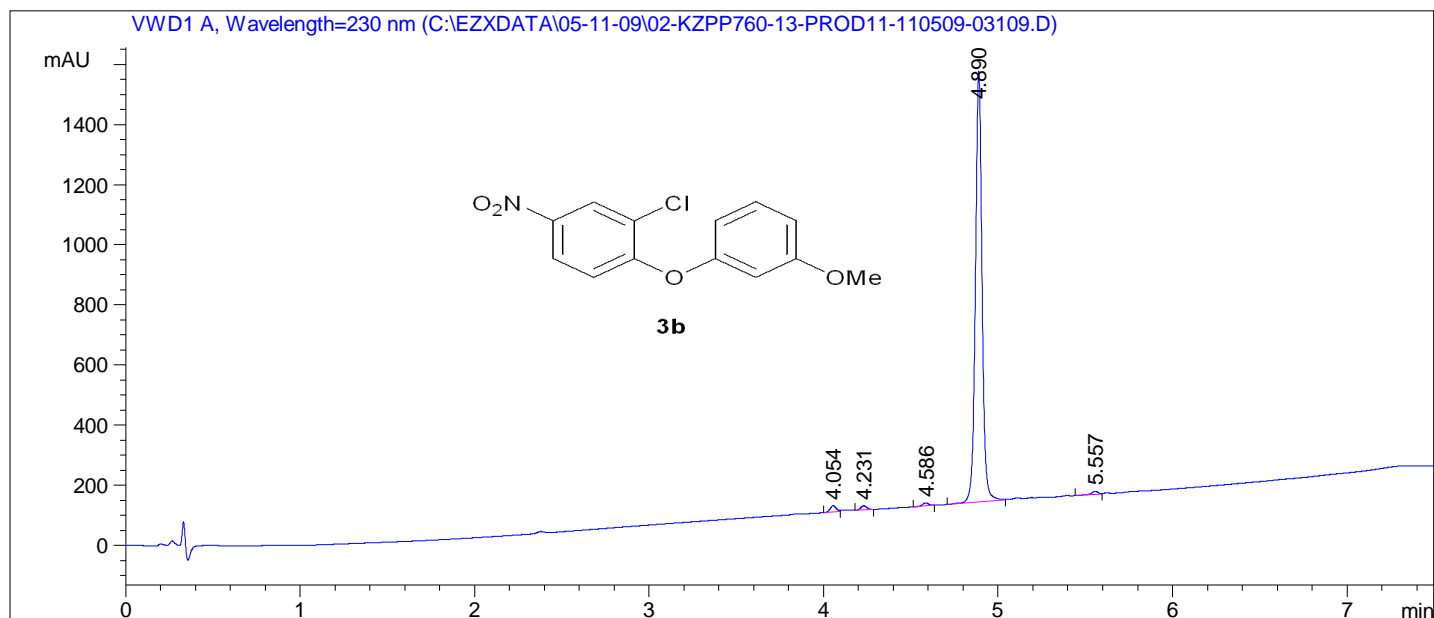
This journal is © The Royal Society of Chemistry 2010

```

=====
Acq. Operator   : Jameel Marafie
Acq. Instrument : ACLC045
Injection Date  : 11/05/2009 10:12:52
Location       : Vial 40
Inj Volume     : 2 µl
Acq. Method    : C:\Chem32\1\METHODS\GENERIC3A.M
Last changed   : 11/05/2009 10:12:15 by Jameel Marafie
Analysis Method : C:\Chem32\1\METHODS\STANDBY.M
Last changed   : 03/11/2009 17:14:32 by JMoseley
Method Info    : Standby method
  
```

```

Sample Info    : =====
                  Column: 3 Polaris Amide
  
```



```

=====
Area Percent Report
=====
  
```

```

Sorted By      : Signal
Multiplier     : 1.0000
Dilution       : 1.0000
Use Multiplier & Dilution Factor with ISTDs
  
```

Signal 1: VWD1 A, Wavelength=230 nm

Peak #	RetTime [min]	Type	Width [min]	Area mAU*s	Height [mAU]	Area %
1	4.054	BV	0.0373	50.27900	21.05592	1.2844
2	4.231	BB	0.0375	32.66526	13.61510	0.8344
3	4.586	BB	0.0371	23.63815	9.99124	0.6038
4	4.890	BV	0.0403	3781.26904	1431.59033	96.5930
5	5.557	BV	0.0400	26.78875	10.24706	0.6843

```
Totals :                3914.64020 1486.49965
```

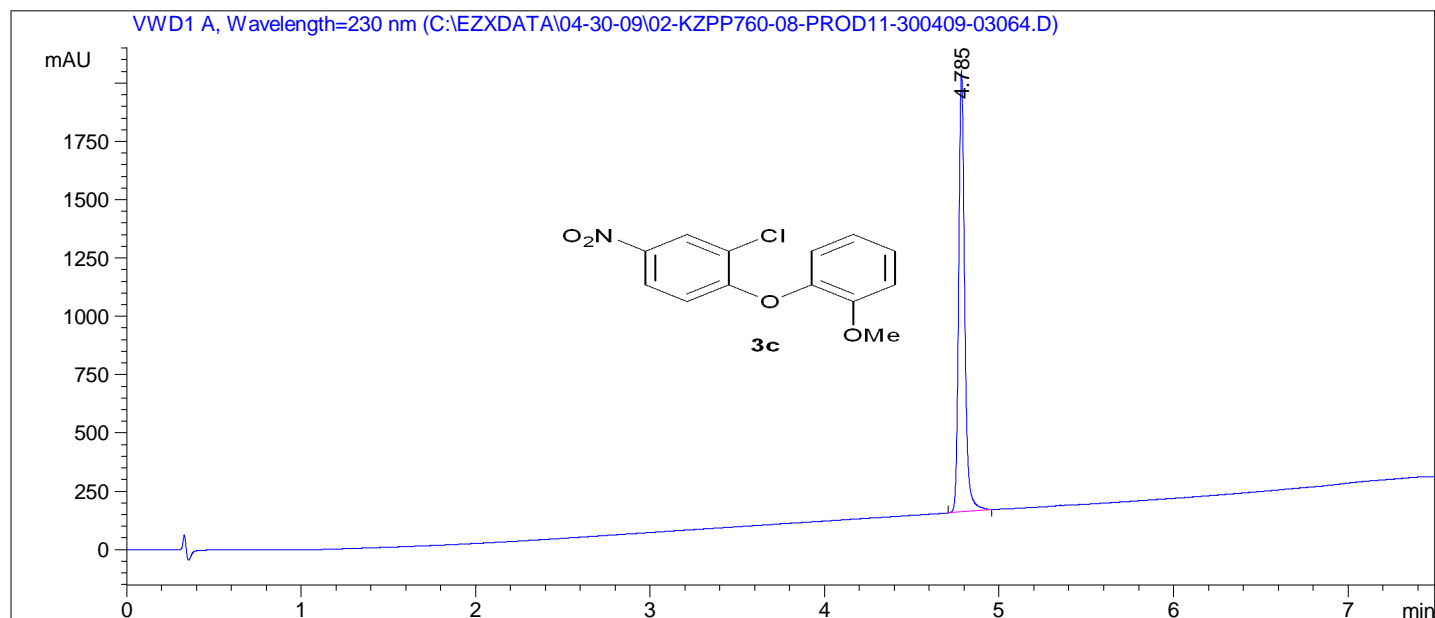
```

=====
Summed Peaks Report
=====
  
```

Signal 1: VWD1 A, Wavelength=230 nm

=====
 Acq. Operator : Jameel Marafie
 Acq. Instrument : ACLC045 Location : Vial 84
 Injection Date : 30/04/2009 10:39:27 Inj Volume : 2 µl
 Acq. Method : C:\Chem32\1\METHODS\GENERIC3A.M
 Last changed : 30/04/2009 10:37:03 by Jameel Marafie
 Analysis Method : C:\Chem32\1\METHODS\STANDBY.M
 Last changed : 03/11/2009 17:14:32 by JMoseley
 Method Info : Standby method

Sample Info : =====
 Column: 3 Polaris Amide



=====
 Area Percent Report
 =====

Sorted By : Signal
 Multiplier : 1.0000
 Dilution : 1.0000
 Use Multiplier & Dilution Factor with ISTDs

Signal 1: VWD1 A, Wavelength=230 nm

Peak #	RetTime [min]	Type	Width [min]	Area mAU*s	Height [mAU]	Area %
1	4.785	BB	0.0365	4489.50000	1887.59973	100.0000

Totals : 4489.50000 1887.59973

=====
 Summed Peaks Report
 =====

Signal 1: VWD1 A, Wavelength=230 nm

=====
 Final Summed Peaks Report
 =====

Signal 1: VWD1 A, Wavelength=230 nm

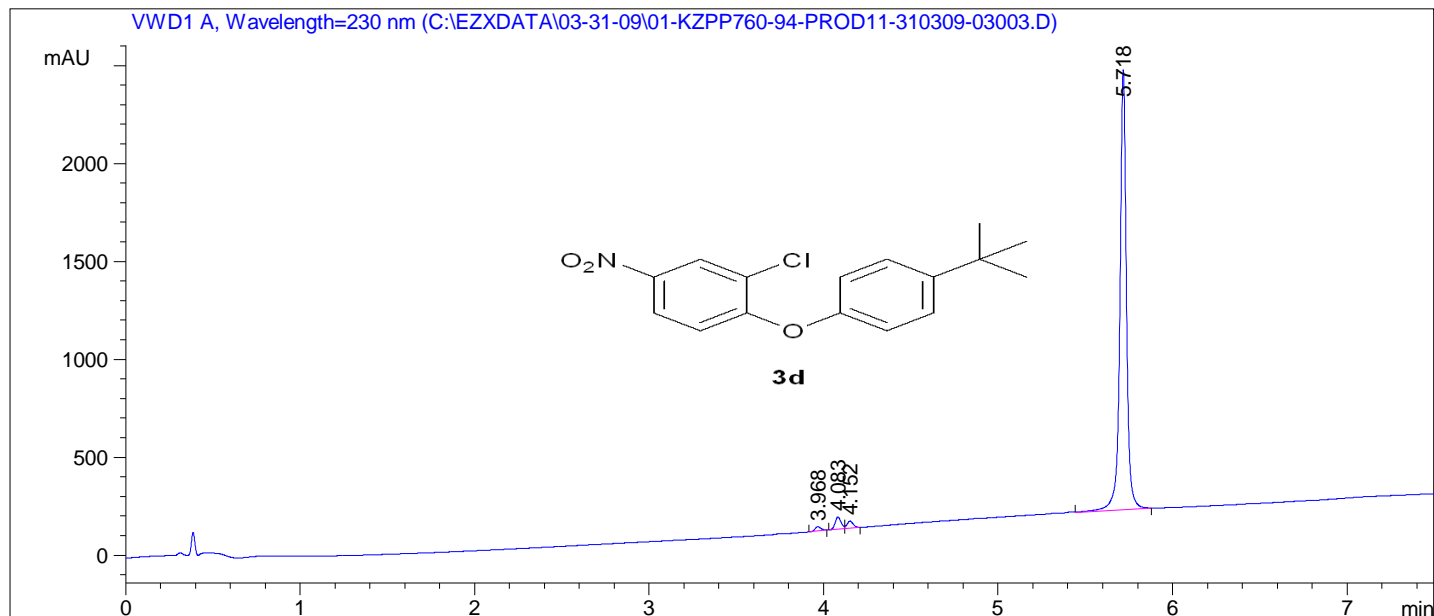
Sample Name: 01-kzpp760-94-prod

Supplementary Material (ESI) for Organic & Biomolecular Chemistry

This journal is © The Royal Society of Chemistry 2010

=====
 Acq. Operator : Jameel Marafie
 Acq. Instrument : ACLC045 Location : Vial 25
 Injection Date : 31/03/2009 10:59:20 Inj Volume : 2 µl
 Acq. Method : C:\Chem32\1\METHODS\GENERIC3A.M
 Last changed : 31/03/2009 10:58:27 by Jameel Marafie
 Analysis Method : C:\Chem32\1\METHODS\STANDBY.M
 Last changed : 03/11/2009 17:14:32 by JMoseley
 Method Info : Standby method

Sample Info : =====
 Column: 3 Polaris Amide



=====
 Area Percent Report
 =====

Sorted By : Signal
 Multiplier : 1.0000
 Dilution : 1.0000
 Use Multiplier & Dilution Factor with ISTDs

Signal 1: VWD1 A, Wavelength=230 nm

Peak #	RetTime [min]	Type	Width [min]	Area mAU*s	Height [mAU]	Area %
1	3.968	BB	0.0359	51.65430	22.18423	0.8392
2	4.083	BV	0.0375	151.91650	63.11425	2.4680
3	4.152	VB	0.0375	89.88761	36.44707	1.4603
4	5.718	VV	0.0392	5861.98438	2247.13892	95.2325

Totals : 6155.44279 2368.88447

=====
 Summed Peaks Report
 =====

Signal 1: VWD1 A, Wavelength=230 nm

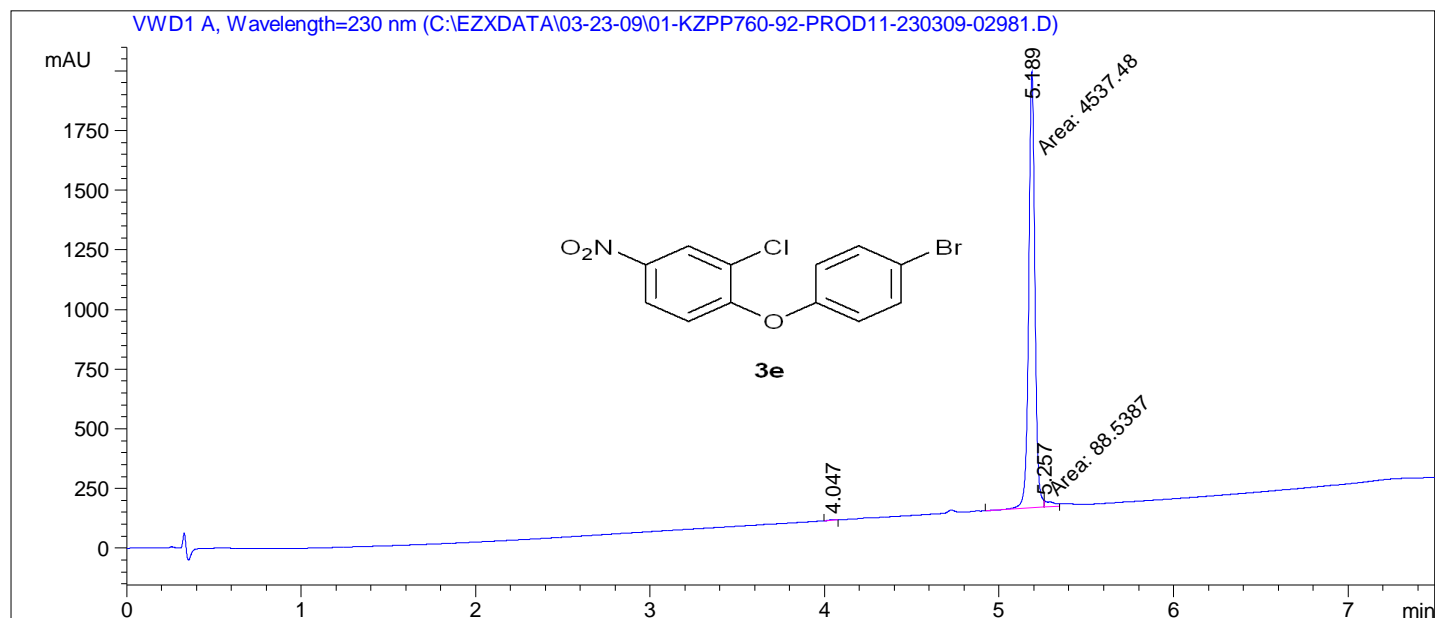
Sample Name: 01-kzpp760-92-prod

Supplementary Material (ESI) for Organic & Biomolecular Chemistry

This journal is © The Royal Society of Chemistry 2010

=====
 Acq. Operator : Jameel Marafie
 Acq. Instrument : ACLC045 Location : Vial 3
 Injection Date : 23/03/2009 09:42:09 Inj Volume : 2 µl
 Acq. Method : C:\Chem32\1\METHODS\GENERIC3A.M
 Last changed : 23/03/2009 09:41:48 by Jameel Marafie
 Analysis Method : C:\Chem32\1\METHODS\STANDBY.M
 Last changed : 03/11/2009 17:14:32 by JMoseley
 Method Info : Standby method

Sample Info : =====
 Column: 3 Polaris Amide



=====
 Area Percent Report
 =====

Sorted By : Signal
 Multiplier : 1.0000
 Dilution : 1.0000
 Use Multiplier & Dilution Factor with ISTDs

Signal 1: VWD1 A, Wavelength=230 nm

Peak #	RetTime [min]	Type	Width [min]	Area mAU*s	Height [mAU]	Area %
1	4.047	BB	0.0342	6.90091	3.25076	0.1490
2	5.189	MF	0.0413	4537.47510	1831.36768	97.9400
3	5.257	FM	0.0442	88.53869	27.88732	1.9111

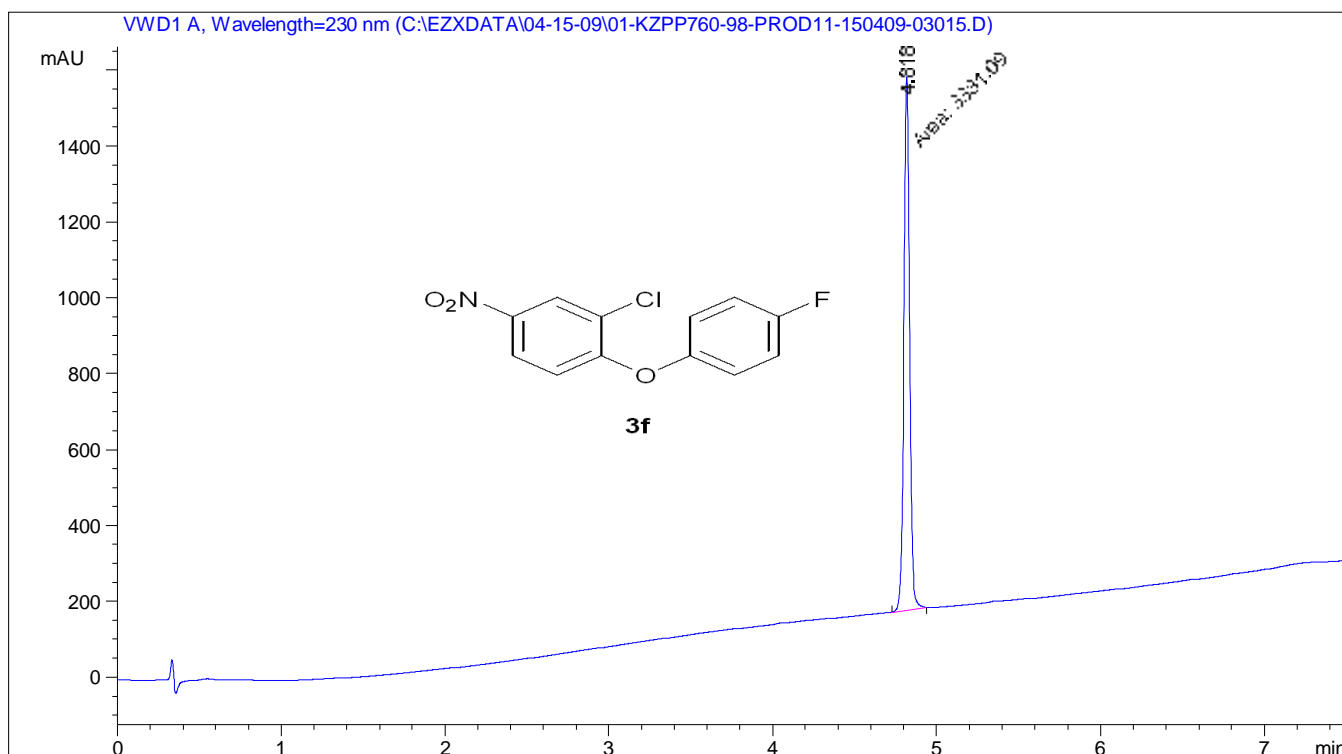
Totals : 4632.91470 1862.50576

=====
 Summed Peaks Report
 =====

Signal 1: VWD1 A, Wavelength=230 nm

=====
Acq. Operator : Jameel Marafie
Acq. Instrument : ACLC045 Location : Vial 37
Injection Date : 15/04/2009 09:01:48 Inj Volume : 2 µl
Acq. Method : C:\Chem32\1\METHODS\GENERIC3A.M
Last changed : 15/04/2009 08:59:39 by Jameel Marafie
Analysis Method : C:\Chem32\1\METHODS\GENERIC3A.M
Last changed : 25/06/2007 13:18:05 by JMoseley
Method Info : Generic Method 3A
Polaris Amide, 3µm, 50 x 3.0mm
M.P.A: 0.03%TFA in Water, M.P.B: 0.03%TFA in ACN
Gradient: 5-95% in 6min, run time: 7.5min
Inj Vol.: 2ul, Det: 230nm, Flow: 1.25ml/min

Sample Info : =====
Column: 3 Polaris Amide



=====
Area Percent Report
=====

Sorted By : Signal
Multiplier : 1.0000
Dilution : 1.0000
Use Multiplier & Dilution Factor with ISTDs

Signal 1: VWD1 A, Wavelength=230 nm

Peak #	RetTime [min]	Type	Width [min]	Area mAU*s	Height [mAU]	Area %
1	4.818	MM	0.0395	3331.08789	1407.23096	100.0000

Totals : 3331.08789 1407.23096

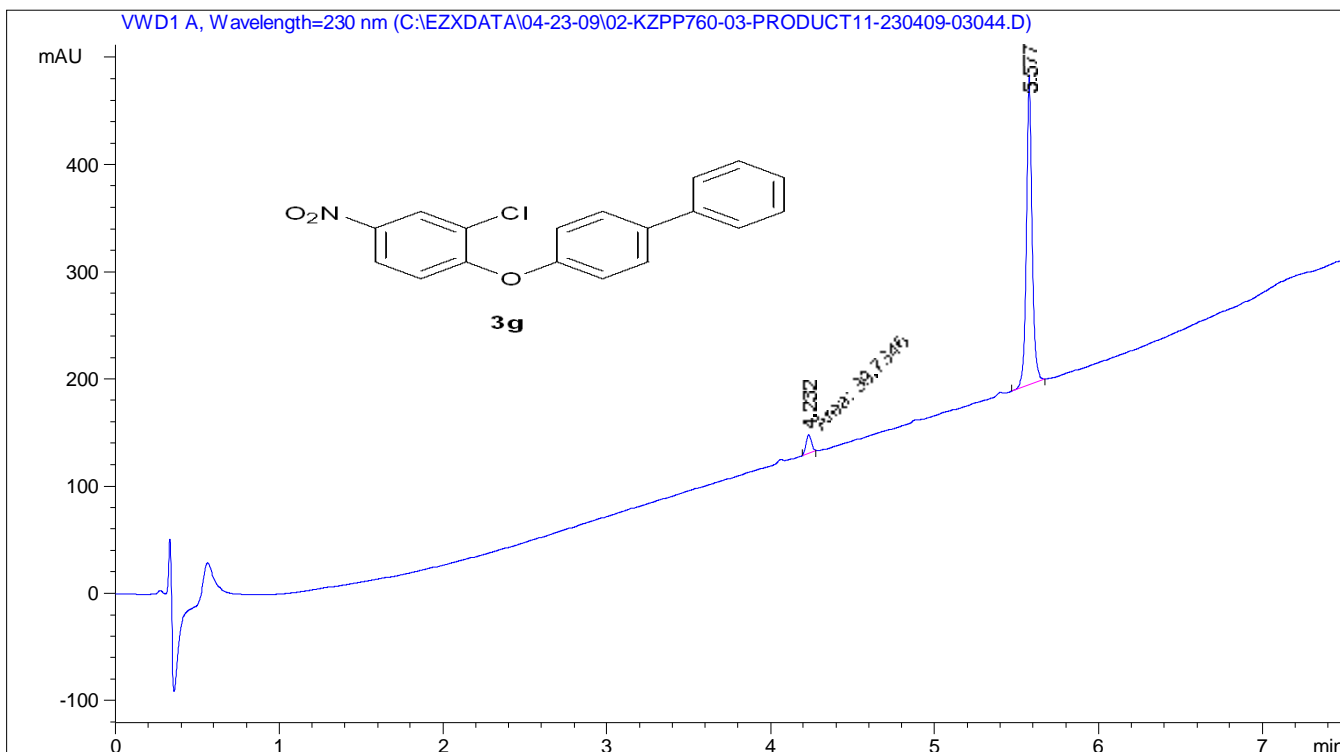
Sample Name: 02-kzpp760-03-product

```

=====
Acq. Operator   : Jameel Marafie
Acq. Instrument : ACLC045
Injection Date  : 23/04/2009 09:45:51
Location       : Vial 66
Inj Volume     : 2 µl

Acq. Method    : C:\Chem32\1\METHODS\GENERIC3A.M
Last changed   : 23/04/2009 09:45:24 by Jameel Marafie
Analysis Method : C:\Chem32\1\METHODS\GENERIC3A.M
Last changed   : 25/06/2007 13:18:05 by JMoseley
Method Info    : Generic Method 3A
                  Polaris Amide, 3µm, 50 x 3.0mm
                  M.P.A: 0.03%TFA in Water, M.P.B: 0.03%TFA in ACN
                  Gradient: 5-95% in 6min, run time: 7.5min
                  Inj Vol.: 2ul, Det: 230nm, Flow: 1.25ml/min
    
```

Sample Info : =====
 Column: 3 Polaris Amide



=====
 Area Percent Report
 =====

```

Sorted By      : Signal
Multiplier     : 1.0000
Dilution       : 1.0000
Use Multiplier & Dilution Factor with ISTDs
    
```

Signal 1: VWD1 A, Wavelength=230 nm

Peak #	RetTime [min]	Type	Width [min]	Area mAU *s	Height [mAU]	Area %
1	4.232	MM	0.0374	39.73460	17.72729	5.3386
2	5.577	BB	0.0372	704.55798	288.83478	94.6614

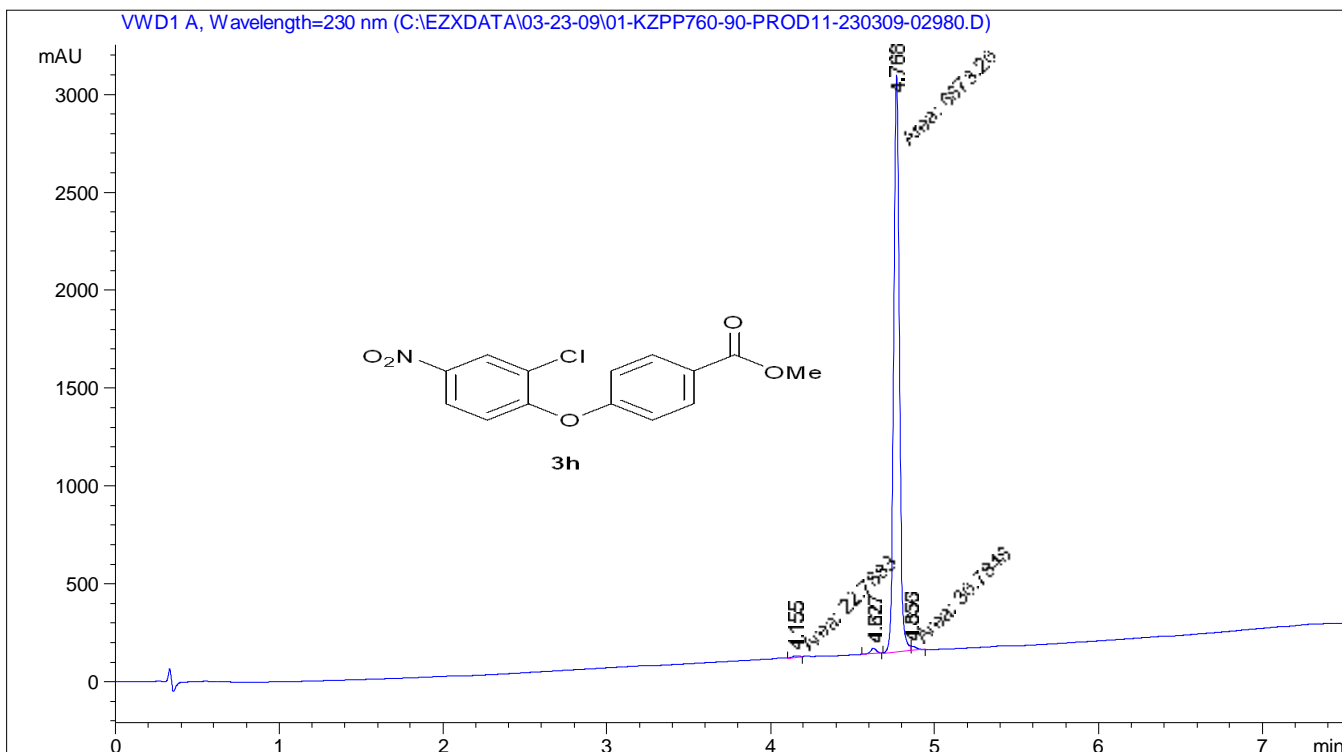
Totals : 744.29258 306.56207

```

=====
Acq. Operator   : Jameel Marafie
Acq. Instrument : ACLC045
Injection Date  : 23/03/2009 09:31:42
Location       : Vial 2
Inj Volume     : 2 µl

Acq. Method    : C:\Chem32\1\METHODS\GENERIC3A.M
Last changed   : 23/03/2009 09:31:25 by Jameel Marafie
Analysis Method : C:\Chem32\1\METHODS\GENERIC3A.M
Last changed   : 25/06/2007 13:18:05 by JMoseley
Method Info    : Generic Method 3A
                  Polaris Amide, 3µm, 50 x 3.0mm
                  M.P.A: 0.03%TFA in Water, M.P.B: 0.03%TFA in ACN
                  Gradient: 5-95% in 6min, run time: 7.5min
                  Inj Vol.: 2ul, Det: 230nm, Flow: 1.25ml/min
    
```

Sample Info : =====
 Column: 3 Polaris Amide



=====
 Area Percent Report
 =====

Sorted By : Signal
 Multiplier : 1.0000
 Dilution : 1.0000
 Use Multiplier & Dilution Factor with ISTDs

Signal 1: VWD1 A, Wavelength=230 nm

Peak #	RetTime [min]	Type	Width [min]	Area mAU*s	Height [mAU]	Area %
1	4.155	MM	0.0397	22.78828	9.56575	0.3259
2	4.627	BB	0.0373	58.64497	24.55140	0.8388
3	4.768	MF	0.0388	6873.26025	2948.87354	98.3091
4	4.856	FM	0.0315	36.78483	19.44295	0.5261

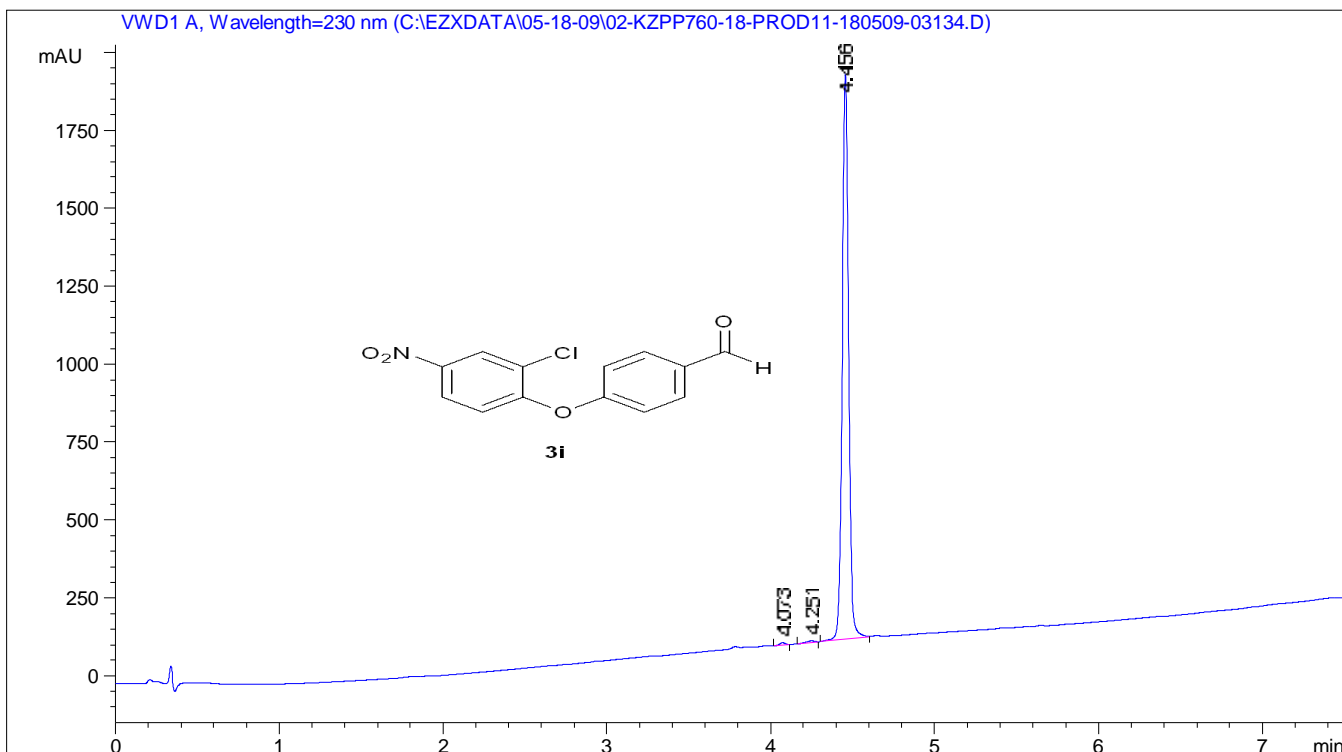
Totals : 6991.47834 3002.43363


```

=====
Acq. Operator   : Jameel Marafie
Acq. Instrument : ACLC045
Injection Date  : 18/05/2009 11:33:37
Location       : Vial 59
Inj Volume     : 2 µl
Acq. Method    : C:\Chem32\1\METHODS\GENERIC3A.M
Last changed   : 18/05/2009 11:31:31 by Jameel Marafie
Analysis Method : C:\Chem32\1\METHODS\GENERIC3A.M
Last changed   : 25/06/2007 13:18:05 by JMoseley
Method Info    : Generic Method 3A
                  Polaris Amide, 3µm, 50 x 3.0mm
                  M.P.A: 0.03%TFA in Water, M.P.B: 0.03%TFA in ACN
                  Gradient: 5-95% in 6min, run time: 7.5min
                  Inj Vol.: 2ul, Det: 230nm, Flow: 1.25ml/min
    
```

```

Sample Info : =====
                  Column: 3 Polaris Amide
    
```



=====
 Area Percent Report
 =====

```

Sorted By      : Signal
Multiplier     : 1.0000
Dilution       : 1.0000
Use Multiplier & Dilution Factor with ISTDs
    
```

Signal 1: VWD1 A, Wavelength=230 nm

Peak #	RetTime [min]	Type	Width [min]	Area mAU*s	Height [mAU]	Area %
1	4.073	BB	0.0392	19.39723	7.80661	0.3974
2	4.251	BB	0.0520	16.78536	4.94290	0.3439
3	4.456	BV	0.0407	4844.61963	1808.30762	99.2587

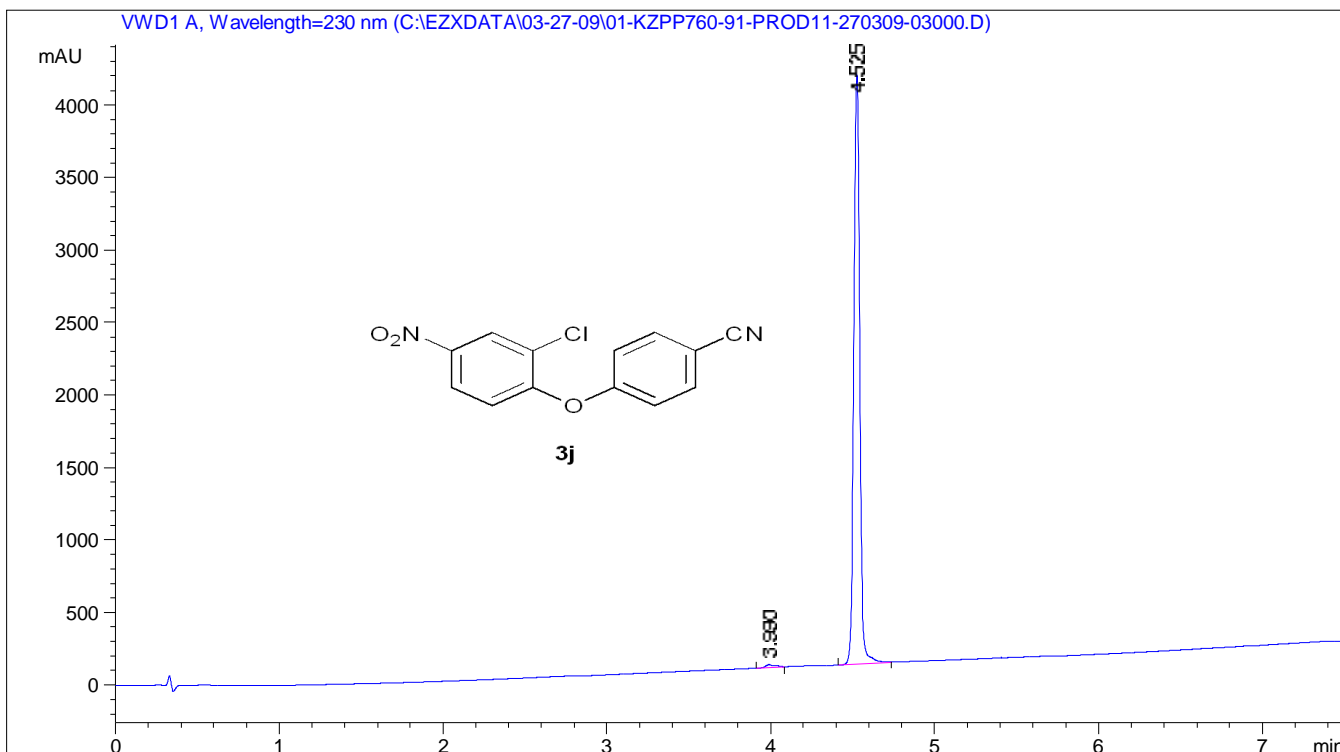
Totals : 4880.80221 1821.05713

```

=====
Acq. Operator   : Jameel Marafie
Acq. Instrument : ACLC045
Injection Date  : 27/03/2009 08:59:51
Location       : Vial 22
Inj Volume     : 2 µl

Acq. Method    : C:\Chem32\1\METHODS\GENERIC3A.M
Last changed   : 27/03/2009 08:57:44 by Jameel Marafie
Analysis Method: C:\Chem32\1\METHODS\GENERIC3A.M
Last changed   : 25/06/2007 13:18:05 by JMoseley
Method Info    : Generic Method 3A
                  Polaris Amide, 3µm, 50 x 3.0mm
                  M.P.A: 0.03%TFA in Water, M.P.B: 0.03%TFA in ACN
                  Gradient: 5-95% in 6min, run time: 7.5min
                  Inj Vol.: 2ul, Det: 230nm, Flow: 1.25ml/min
    
```

Sample Info : =====
 Column: 3 Polaris Amide



=====
 Area Percent Report
 =====

```

Sorted By      : Signal
Multiplier     : 1.0000
Dilution       : 1.0000
Use Multiplier & Dilution Factor with ISTDs
    
```

Signal 1: VWD1 A, Wavelength=230 nm

Peak #	RetTime [min]	Type	Width [min]	Area mAU*s	Height [mAU]	Area %
1	3.990	BB	0.0503	80.75111	23.04885	0.7992
2	4.525	BV	0.0383	1.00231e4	4061.65015	99.2008

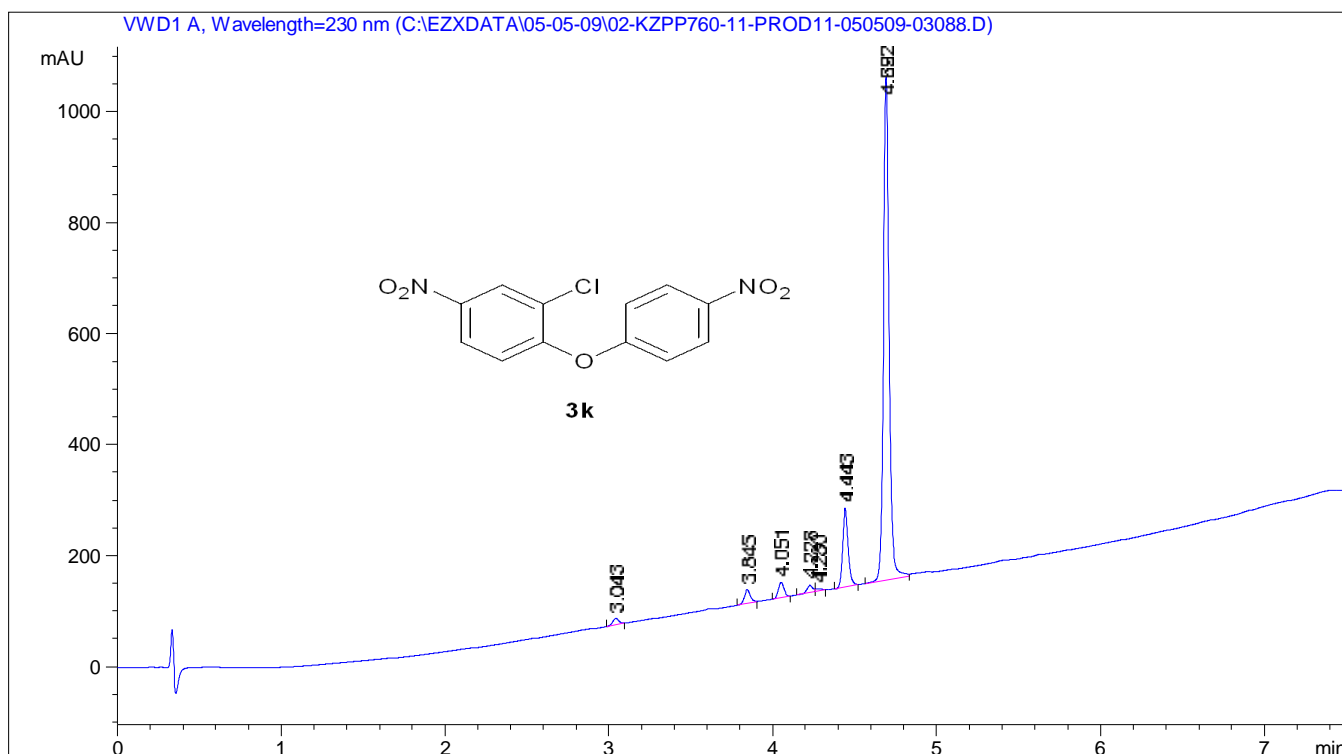
Totals : 1.01039e4 4084.69899

```

=====
Acq. Operator   : Jameel Marafie
Acq. Instrument : ACLC045
Injection Date  : 05/05/2009 11:25:03
Location       : Vial 19
Inj Volume    : 2 µl

Acq. Method    : C:\Chem32\1\METHODS\GENERIC3A.M
Last changed   : 05/05/2009 11:22:43 by Jameel Marafie
Analysis Method : C:\Chem32\1\METHODS\GENERIC3A.M
Last changed   : 25/06/2007 13:18:05 by JMoseley
Method Info    : Generic Method 3A
                  Polaris Amide, 3µm, 50 x 3.0mm
                  M.P.A: 0.03%TFA in Water, M.P.B: 0.03%TFA in ACN
                  Gradient: 5-95% in 6min, run time: 7.5min
                  Inj Vol.: 2ul, Det: 230nm, Flow: 1.25ml/min
    
```

Sample Info : =====
 Column: 3 Polaris Amide



=====
 Area Percent Report
 =====

Sorted By : Signal
 Multiplier : 1.0000
 Dilution : 1.0000
 Use Multiplier & Dilution Factor with ISTDs

Signal 1: VWD1 A, Wavelength=230 nm

Peak #	RetTime [min]	Type	Width [min]	Area mAU *s	Height [mAU]	Area %
1	3.043	BB	0.0397	27.09153	10.69336	0.9954
2	3.845	BB	0.0386	61.07278	24.44015	2.2440
3	4.051	BB	0.0366	63.80969	27.46606	2.3445
4	4.228	BV	0.0368	31.88045	13.25194	1.1714
5	4.280	VB	0.0356	11.10467	4.68768	0.4080
6	4.443	BB	0.0358	329.19266	142.03198	12.0954

Data File C:\EZXDATA\05-05-09\02-KZPP760-11-PROD11-050509-03088.D
This journal is © The Royal Society of Chemistry 2010
Sample Name: 02-kzpp760-11-prod

Peak #	RetTime [min]	Type	Width [min]	Area mAU *s	Height [mAU]	Area %
7	4.692	BV	0.0370	2197.48828	905.79956	80.7413

Totals : 2721.64005 1128.37073

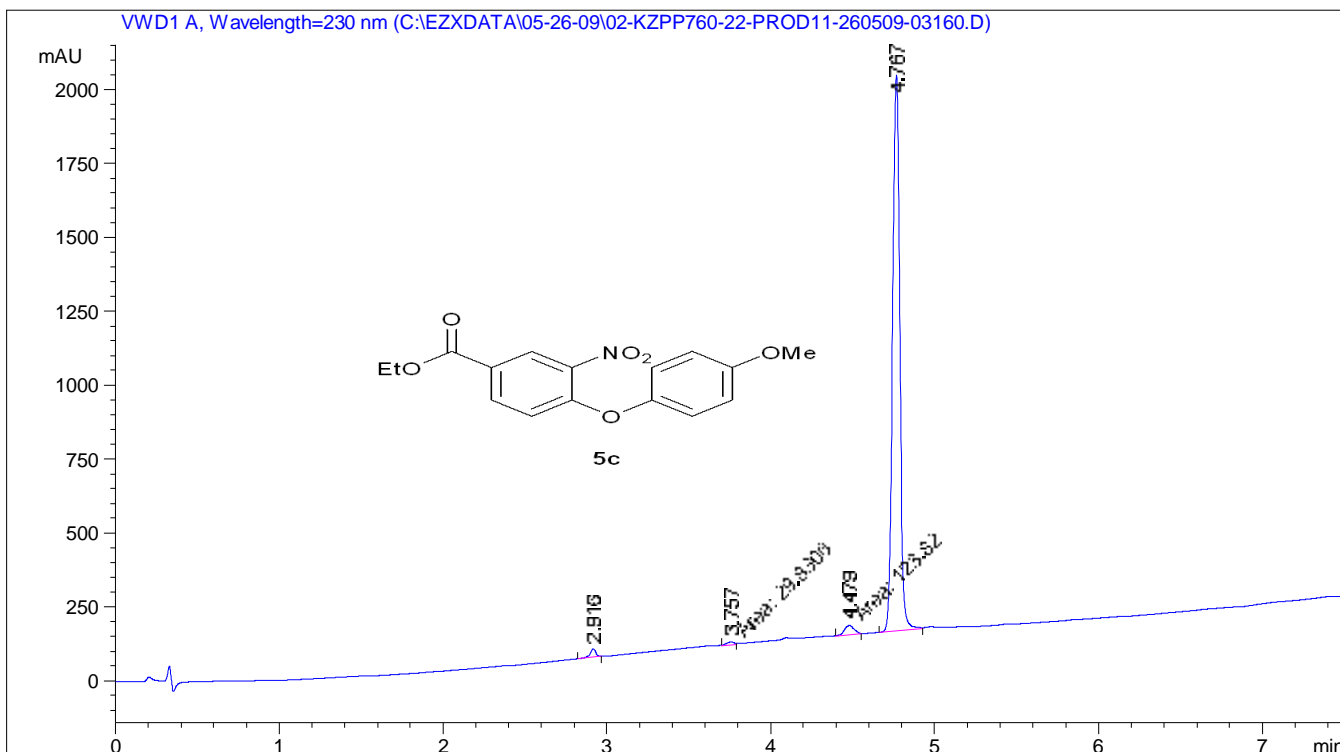
=====
*** End of Report ***

```

=====
Acq. Operator   : Jameel Marafie
Acq. Instrument : ACLC045
Injection Date  : 26/05/2009 09:05:16
Location       : Vial 85
Inj Volume     : 2 µl

Acq. Method    : C:\Chem32\1\METHODS\GENERIC3A.M
Last changed   : 26/05/2009 09:03:20 by Jameel Marafie
Analysis Method : C:\Chem32\1\METHODS\GENERIC3A.M
Last changed   : 25/06/2007 13:18:05 by JMoseley
Method Info    : Generic Method 3A
                  Polaris Amide, 3µm, 50 x 3.0mm
                  M.P.A: 0.03%TFA in Water, M.P.B: 0.03%TFA in ACN
                  Gradient: 5-95% in 6min, run time: 7.5min
                  Inj Vol.: 2ul, Det: 230nm, Flow: 1.25ml/min
    
```

Sample Info : =====
 Column: 3 Polaris Amide



=====
 Area Percent Report
 =====

Sorted By : Signal
 Multiplier : 1.0000
 Dilution : 1.0000
 Use Multiplier & Dilution Factor with ISTDs

Signal 1: VWD1 A, Wavelength=230 nm

Peak #	RetTime [min]	Type	Width [min]	Area mAU*s	Height [mAU]	Area %
1	2.916	BB	0.0364	65.57475	27.60541	1.1145
2	3.757	MM	0.0555	29.83058	8.96049	0.5070
3	4.479	MM	0.0641	123.82004	32.18771	2.1045
4	4.767	BV	0.0468	5664.37305	1878.83118	96.2740

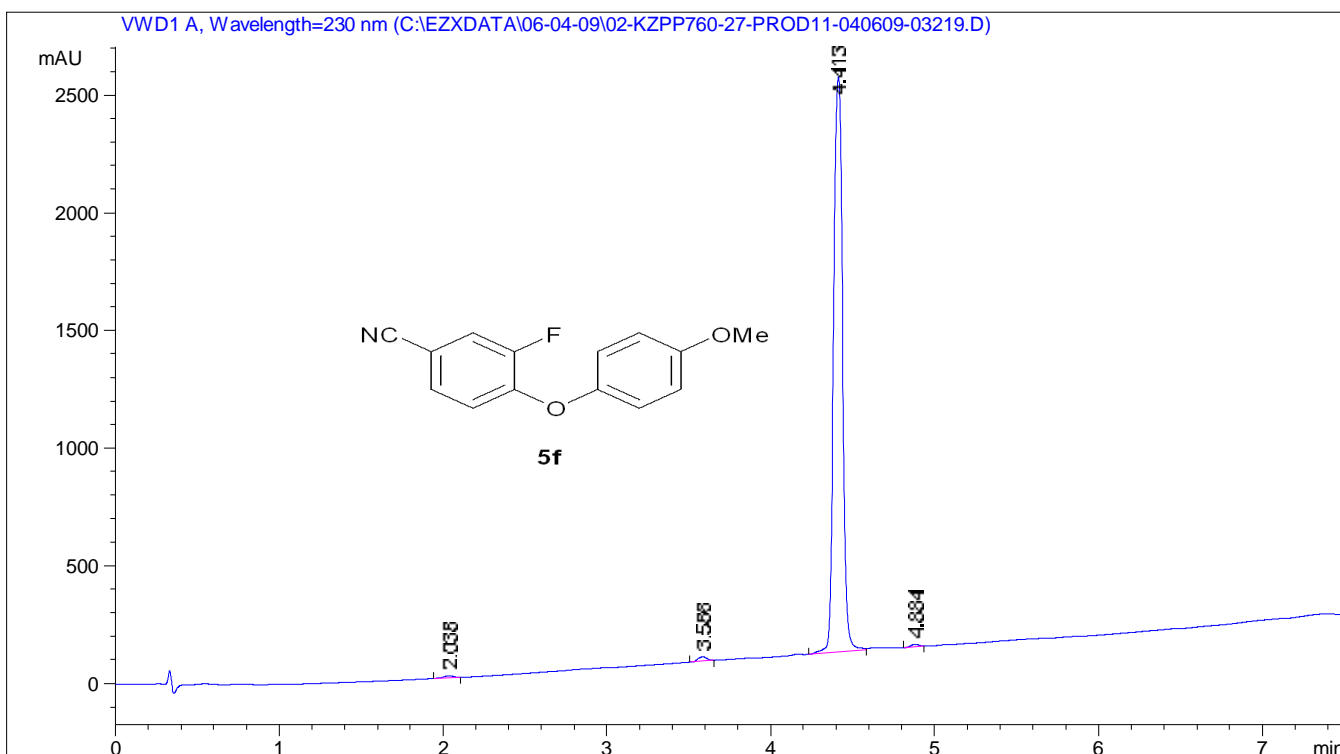
Totals : 5883.59841 1947.58478

```

=====
Acq. Operator   : Jameel Marafie
Acq. Instrument : ACLC045
Injection Date  : 04/06/2009 08:28:18
Location        : Vial 54
Inj Volume     : 2 µl
Acq. Method    : C:\Chem32\1\METHODS\GENERIC3A.M
Last changed   : 04/06/2009 08:26:01 by Jameel Marafie
Analysis Method : C:\Chem32\1\METHODS\GENERIC3A.M
Last changed   : 25/06/2007 13:18:05 by JMoseley
Method Info    : Generic Method 3A
                  Polaris Amide, 3µm, 50 x 3.0mm
                  M.P.A: 0.03%TFA in Water, M.P.B: 0.03%TFA in ACN
                  Gradient: 5-95% in 6min, run time: 7.5min
                  Inj Vol.: 2ul, Det: 230nm, Flow: 1.25ml/min
    
```

```

Sample Info : =====
                  Column: 3 Polaris Amide
    
```



=====
 Area Percent Report
 =====

```

Sorted By      : Signal
Multiplier     : 1.0000
Dilution       : 1.0000
Use Multiplier & Dilution Factor with ISTDs
    
```

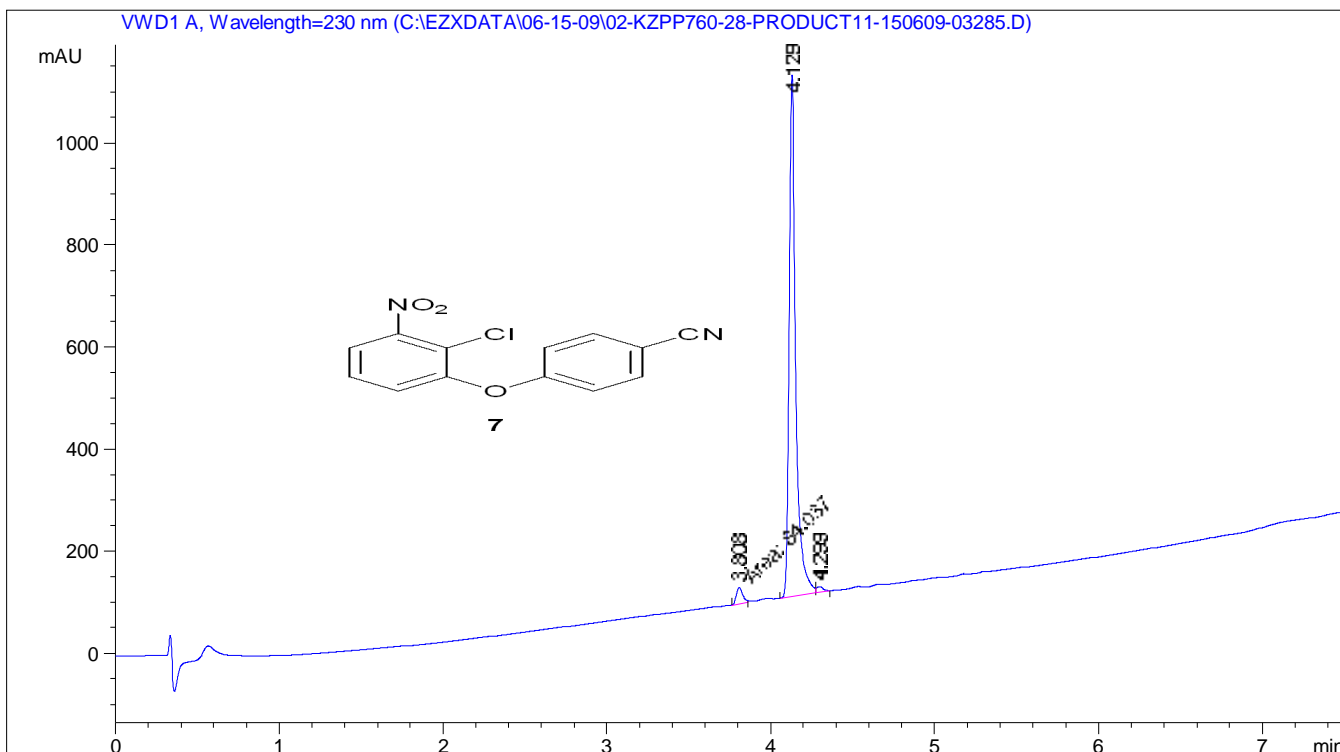
Signal 1: VWD1 A, Wavelength=230 nm

Peak #	RetTime [min]	Type	Width [min]	Area mAU*s	Height [mAU]	Area %
1	2.038	BB	0.0735	42.95218	9.42869	0.4583
2	3.586	BB	0.0568	72.01972	20.62631	0.7685
3	4.413	BV	0.0608	9223.35938	2442.05225	98.4207
4	4.884	BB	0.0587	33.02755	9.19337	0.3524

Totals : 9371.35883 2481.30062

=====
Acq. Operator : Jameel Marafie
Acq. Instrument : ACLC045 Location : Vial 31
Injection Date : 15/06/2009 09:58:36 Inj Volume : 2 µl
Acq. Method : C:\Chem32\1\METHODS\GENERIC3A.M
Last changed : 15/06/2009 09:58:05 by Jameel Marafie
Analysis Method : C:\Chem32\1\METHODS\GENERIC3A.M
Last changed : 25/06/2007 13:18:05 by JMoseley
Method Info : Generic Method 3A
Polaris Amide, 3µm, 50 x 3.0mm
M.P.A: 0.03%TFA in Water, M.P.B: 0.03%TFA in ACN
Gradient: 5-95% in 6min, run time: 7.5min
Inj Vol.: 2ul, Det: 230nm, Flow: 1.25ml/min

Sample Info : =====
Column: 3 Polaris Amide



=====
Area Percent Report
=====

Sorted By : Signal
Multiplier : 1.0000
Dilution : 1.0000
Use Multiplier & Dilution Factor with ISTDs

Signal 1: VWD1 A, Wavelength=230 nm

Peak #	RetTime [min]	Type	Width [min]	Area mAU*s	Height [mAU]	Area %
1	3.808	MM	0.0441	84.03696	31.75223	2.8340
2	4.129	BV	0.0420	2852.31641	1022.00897	96.1890
3	4.299	VB	0.0409	28.97014	10.52226	0.9770

Totals : 2965.32351 1064.28346

Sample Name: 02-kzpp760-49-prod3

Supplementary Material (ESI) for Organic & Biomolecular Chemistry

This journal is © The Royal Society of Chemistry 2010

```

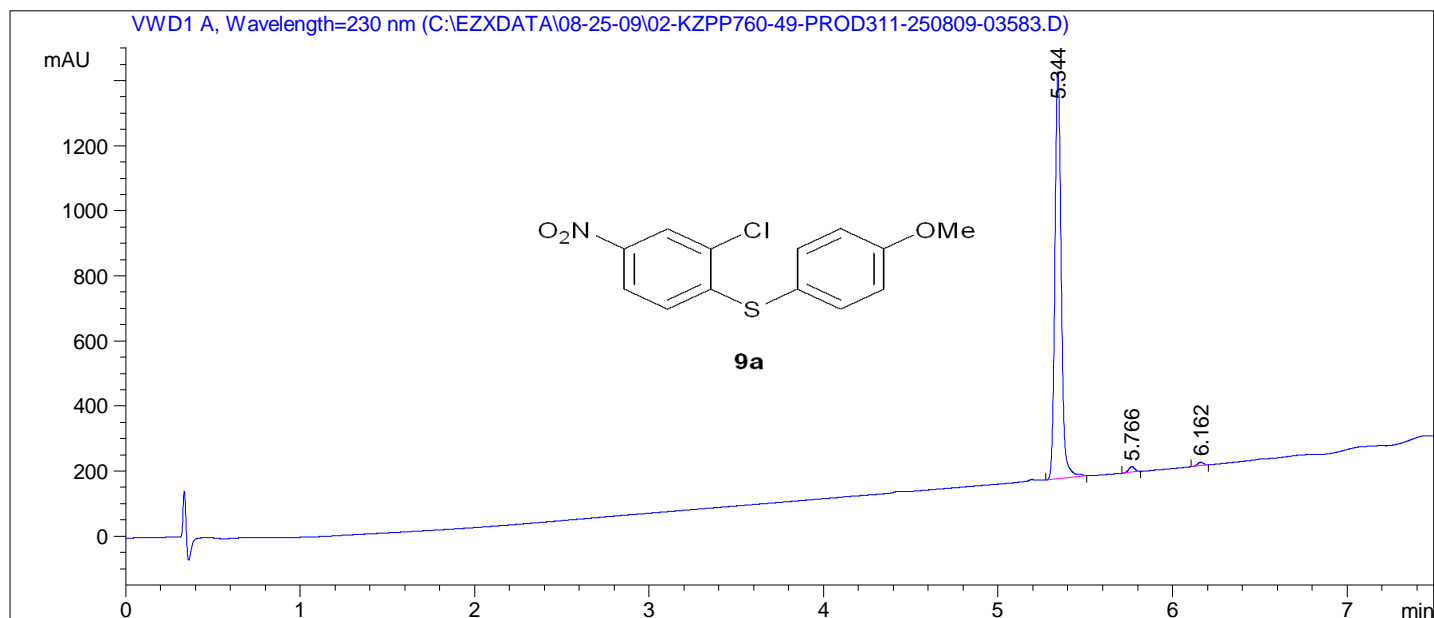
=====
Acq. Operator   : Jameel Marafie
Acq. Instrument : ACLC045
Injection Date  : 25/08/2009 13:53:50
Location       : Vial 46
Inj Volume     : 2 µl
Acq. Method    : C:\Chem32\1\METHODS\GENERIC3A.M
Last changed   : 25/08/2009 13:53:07 by Jameel Marafie
Analysis Method : C:\Chem32\1\METHODS\STANDBY.M
Last changed   : 03/11/2009 17:14:32 by JMoseley
Method Info    : Standby method
=====

```

```

Sample Info : =====
              Column: 3 Polaris Amide
=====

```



```

=====
Area Percent Report
=====

```

```

Sorted By      : Signal
Multiplier     : 1.0000
Dilution       : 1.0000
Use Multiplier & Dilution Factor with ISTDs

```

Signal 1: VWD1 A, Wavelength=230 nm

Peak #	RetTime [min]	Type	Width [min]	Area mAU*s	Height [mAU]	Area %
1	5.344	BB	0.0398	3172.07739	1250.88013	97.9217
2	5.766	BB	0.0386	42.80312	17.59350	1.3213
3	6.162	BB	0.0383	24.52017	10.18733	0.7569

```
Totals :                3239.40068 1278.66096
```

```

=====
Summed Peaks Report
=====

```

Signal 1: VWD1 A, Wavelength=230 nm